

[www.idabees.org](http://www.idabees.org)

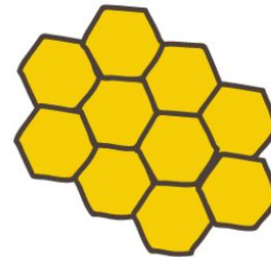
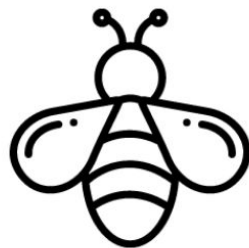


presents

## Beekeeping in the Treasure Valley

March 12, 2024 7:00-9:00 pm

Idaho Outdoor Association



## Agenda

- The role of bees
- Challenges facing bees today
- Helping bees and other pollinators
- Backyard beekeeping
- The Treasure Valley Beekeepers Club
- Swarms

## TVBC Representatives

- Irene Lucy
- Steve Sweet
- Jacob Westrick
- Garrett Hanna
- Brooklin Gore

[idabees.org](http://idabees.org)



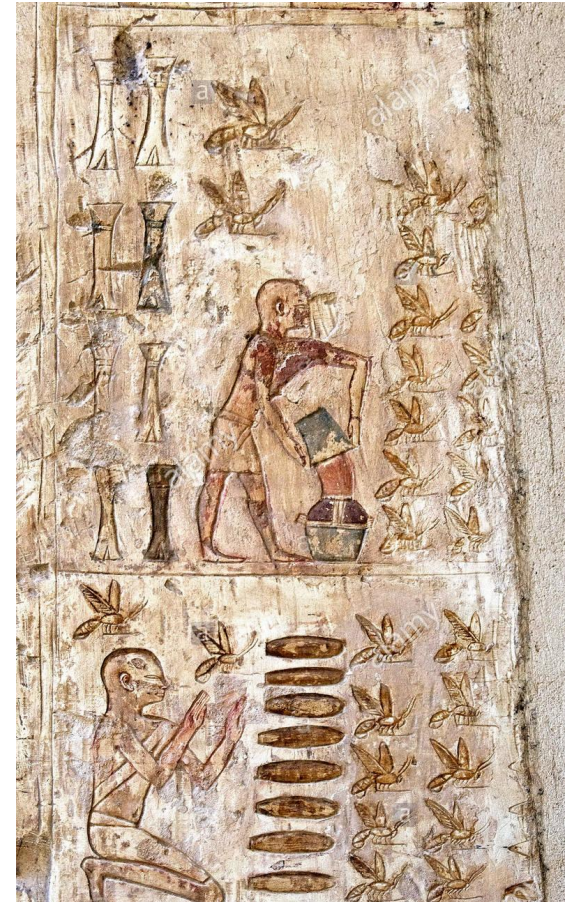
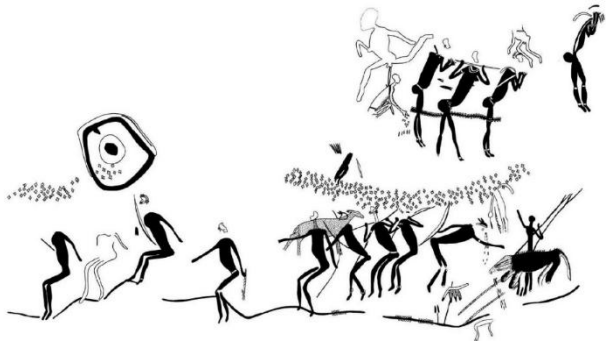
# The Role of Bees

Jacob



# Bees and Us

- Rock Paintings from the San People (70,000 Years)
- Arana Painting in Spain (9,000 Years)
- Egyptian Hieroglyphics (5,500 Years)



# We need Bees

- **Production of ~ 1/3 of the human diet requires insect pollination**
  - Honey bees perform the majority of pollination for these cultivated crops.
- **Globally, 3 out of 4 species of cultivated crops are animal pollinated**
  - Honey bees are able to pollinate most of these crops.
- **Honeybees pollinate \$15 billion worth of crops in the United States each year**
  - Over 130 types of fruits, nuts, and vegetables

- **Honeybees produced honey worth \$8.6 billion worldwide in 2021**
  - And other hive products like pollen, royal jelly and wax

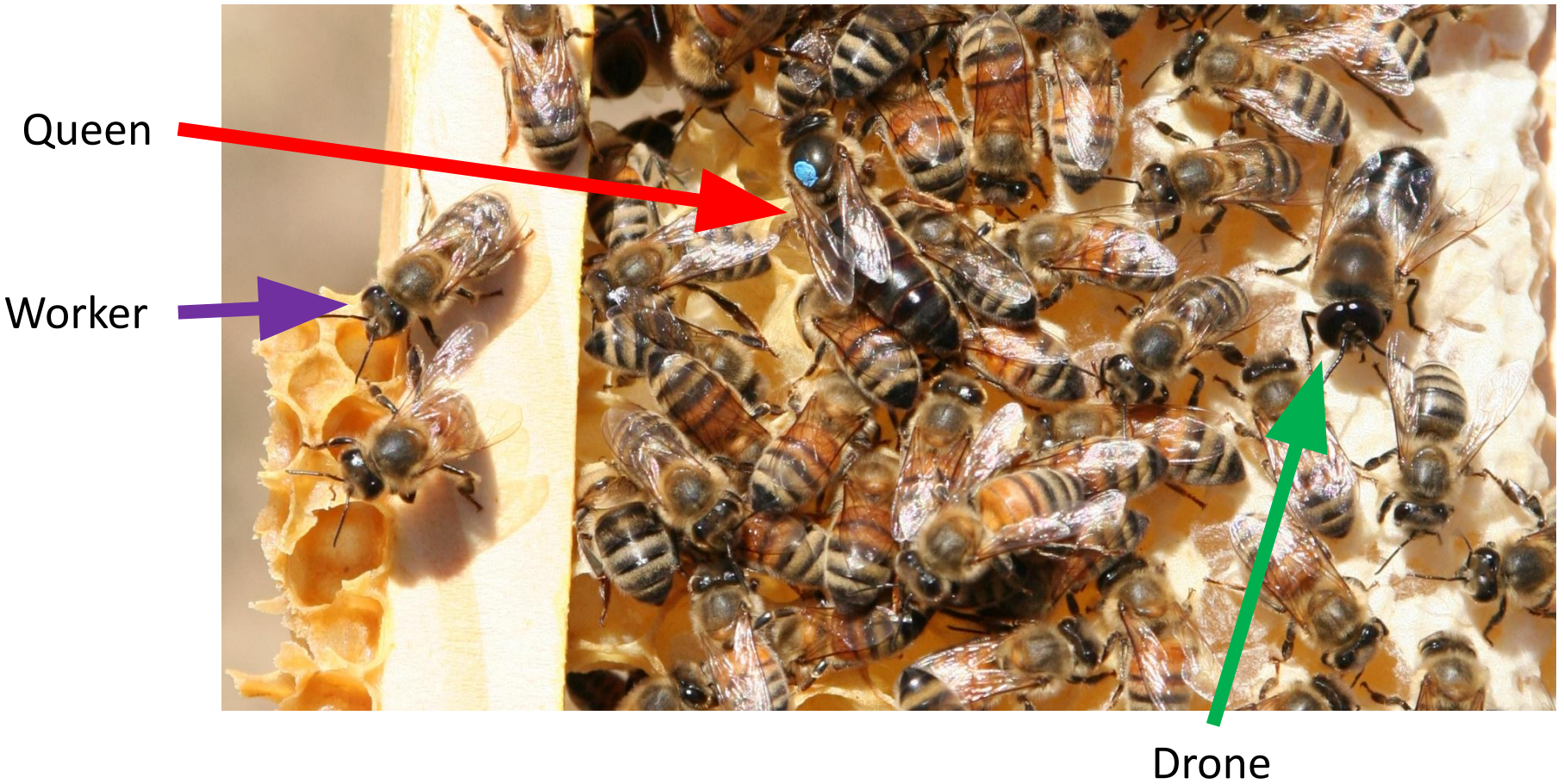


# Three types of bees in every hive



© Alex Wild  
alexanderwild.com

# Three castes:



Sweet trivia: Young bees have to be taught how to make honey.

# Challenges facing bees today

Steve



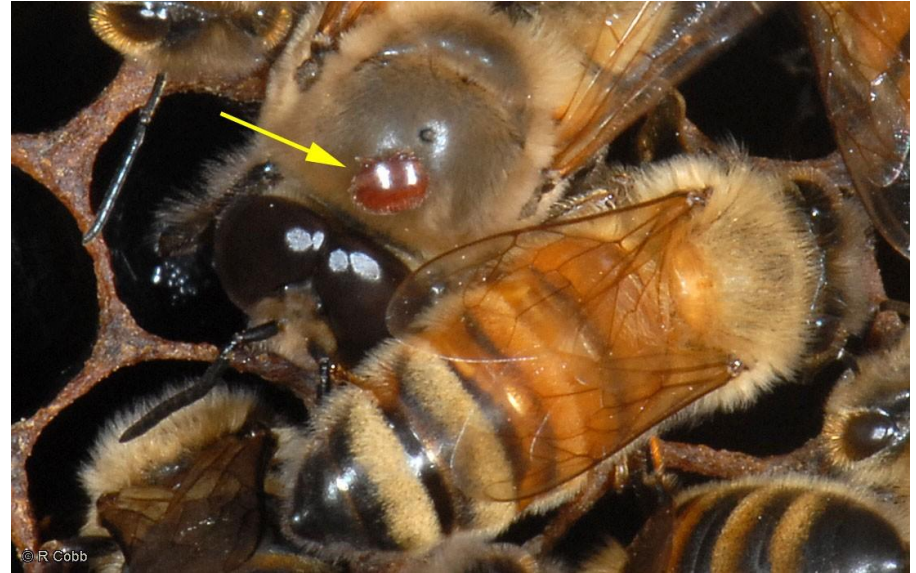


# Problems and Challenges Facing Bees

**Climate Change**



**Pesticides/Herbicides**



**Mono Culture**

**Parasites & Diseases**



**VARROA MITES**



**Varroa mite on bee**

## WAX MOTHS



The Wax Moth is a very destructive insect pest in the beehive. The adult moth is a heavy bodied small moth about  $\frac{1}{2}$ " to  $\frac{3}{4}$ " long, wings vary in color from grayish to brown and the underside is light gray. The mated females will fly into a colony 1 to 3 hours after dark and lay their eggs and then leave before daylight. The eggs are laid in masses and are light in color. Most beekeepers are unaware of this activity until they see the fat white larvae that reach about 1" in length. The larvae are pointed on both ends and have a brown head. They prefer dark comb because it is rich in hive debris which is a higher quality of food for them. They will remain in the larval state for at least 18 days and up to 3 months. While spinning their cocoon they will chew out oval depressions in your hive bodies, inner covers and frames. If left unchecked they will not only destroy the comb but will do much damage to the wooden parts as well.

# Helping bees and other pollinators

Irene





# What Can You Do?

## Easiest

- 
- Be Responsible in Using Pesticides / Herbicides
  - Don't use pesticide companies
  - Only Plant with Non-Coated Seeds (Neonicotinoids)
- Buy Local Honey
  - Great taste, good for you
- Join the TVBC
- Keep a Birdbath or Water Feature
- Create a bee friendly environment
- Raise bees
- 

## More involved



- High maintenance
- High water use
- Habitat desert
- Treatment prone



**None of that**

# Make Your Lawn Bee Friendly

## Plant low, flowering plants and grasses

- Clover, self-heal, creeping thyme
- Overseed, or green field

## Mow less

- Every other week, monthly
- Highest setting

## Love Dandelions

- Bees do
- Manage in evening

## Flowers

Colorado  
Columbine

Fuzzytongue  
Penstemon

Hairy Golden  
Aster

Wild  
Beebalm

Slender White  
Prairie Clover

White  
Yarrow

Blanketflower

Perennial Prairie  
Sunflower

Dotted  
Gayfeather

Purple  
Coneflower

Smooth  
Aster

## Shrubs

American  
Plum

Golden  
Currant

Chokecherry

Redosier  
Dogwood

Serviceberry

Common  
Snowberry

Blue  
Elderberry

Woods  
Rose

Rabbitbrush

# Plant for Pollinators

## Reduce pesticide use

- Enhances weed seed suppression
- Plant diversity minimizes disease

## Stabilized soil and ground cover

- Strong root systems
- Provides shade to hold moisture

## Provides wildlife habitat

- Greater insect diversity
- More pollinators and birds



# Backyard Beekeeping in the T. V.


Garrett





# So, you want to be a backyard beekeeper?

- Allowed in most areas of the Treasure Valley
  - Kuna land zoned "A" (Ag land, 5 ac or more) and "R-2" (1/2 ac lots) are the only permitted land uses that allow bees. ([https://library.municode.com/id/kuna/codes/city\\_code?nodeId=TIT5ZORE\\_CH3ZODIRE\\_5-3-20FSCDIRE](https://library.municode.com/id/kuna/codes/city_code?nodeId=TIT5ZORE_CH3ZODIRE_5-3-20FSCDIRE))
  - Boise City allows beekeeping under the revised zoning code as found in 11-03-03 .1.B (next slide)
- Know your HOA requirements (your neighbors do)
- Meet your neighbors (before your bees do)



Boise city  
ordinance  
6849

**Chapter 11-03-03 4. B. Beekeeping, Accessory:** The purpose of these regulations is to ensure sound beekeeping practices and avoid problems that might be associated with the keeping of bees in an urban setting.

(1) Standards: All beekeeping shall comply with the following standards:

(a) **Noxious Insects Prohibited:** The keeping of wasps, hornets, Africanized bees (*Apis mellifera scutellata*) and other noxious insects is prohibited.

(b) **Density of Hives and Colonies:** There is no minimum parcel size for beekeeping, but the **maximum density is three colonies per one-fourth acre**. Higher densities may be permitted by Conditional Use Permit.

(c) **Nucleus Colonies:** For every two colonies authorized above, one additional nucleus colony is allowed.

(d) **Hives: Colonies shall be kept in hives with removable frames.**

(e) **Flyway Barriers:** For colonies located within 25 feet of a property boundary, a flyway barrier at least six feet in height consisting of a solid wall, fence, or dense hedge parallel to the property line and extending 10 feet beyond the apiary in each direction is required.

(f) **Setbacks And Placement:** Hives shall be located **at least 20 feet from front property lines and three feet from other property lines**. The back of the hive shall be oriented to abutting properties.

(g) **Water Source: A constant supply of fresh water is required.** It shall be readily accessible to the bees and to allow them to access water by landing on a hard surface. A water supply is not required during winter and other inactive months.

(h) **Maintenance:** Hives not being actively maintained shall be removed. **Colonies shall be maintained so as to not interfere with the quiet enjoyment of surrounding properties.**

(i) **Queens:** Where a colony exhibits unusually aggressive characteristics the colony shall be destroyed or re-queened.

(j) **Compliance with State Statutes:** Beekeeping shall comply with all applicable state laws.

(k) **Contact Information: Contact information for a responsible party shall be posted at apiaries on vacant property.**

# Why Raise Bees?

- Pollinate Your Garden, Trees and Flowers
- Teaches Planning, Patience and Confidence
- Best Honey You'll Ever Taste
- Helps a Critical Problem
- Best Hobby Ever



# A nice Apiary

Prevailing winds



Evergreen hedge

Dappled sunlight

Good drainage

Water source

Easy access

# Hive types

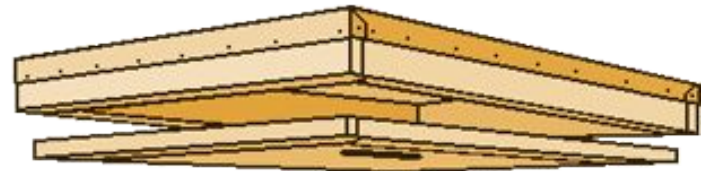


Hex Hive  
Top Bar  
Warre  
Dome  
Horizontal  
Golden



**Langstroth  
Hive – The  
Standard.  
Patented in  
1852**

Outer Cover  
Inner Cover



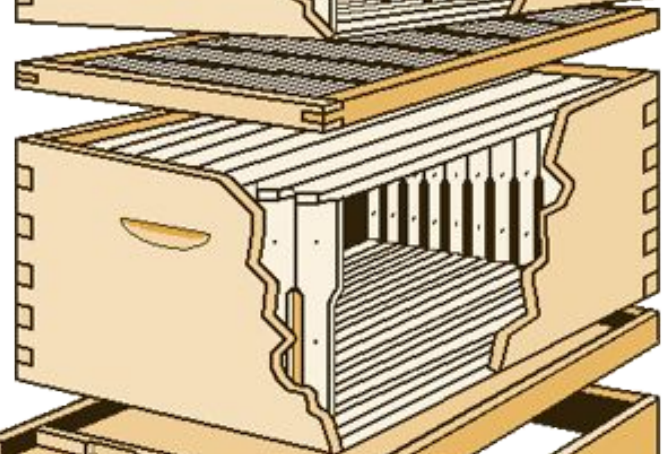
Honey supers



Queen Excluder



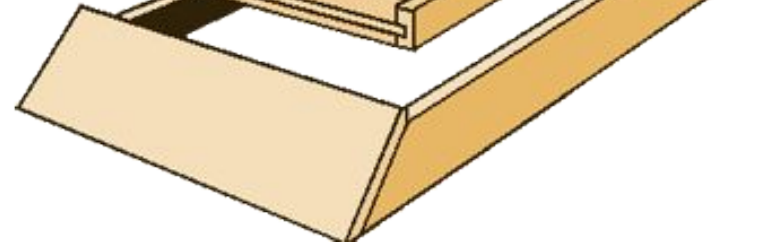
Deep Super



Bottom Board

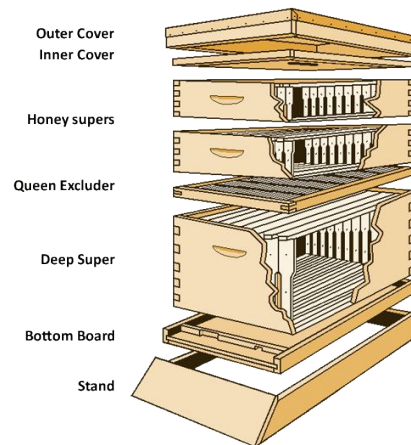


Stand



# Hives in the Apiary

- Keep the Hive out of Water
- Away from Mud Splatter
- Possible Skunk Avoidance
- Minimize Ant and Mouse





# Required Equipment



Hive Kit (\$350+)



Hive Tool (\$12)



Bee Gloves (\$25)



Bee Jacket (\$135)



Internal Feeder (\$15)



Smoker (\$30)

## Total Startup Costs

\$742 - Equipment

\$175 - Bees



Getting Bees

---

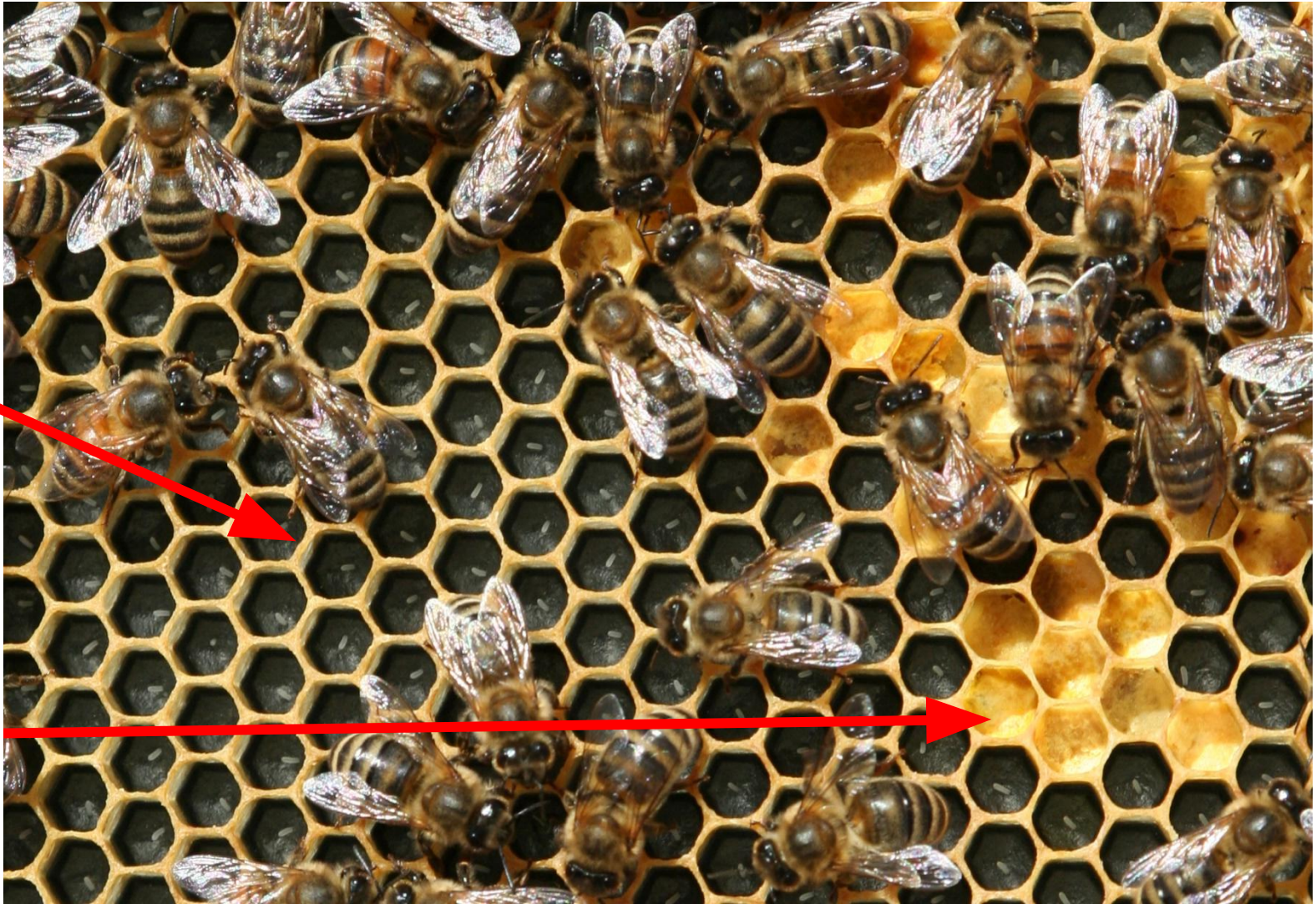
# Perfect Brood Frame



Brood: refers to the eggs, larvae and pupae of honeybees

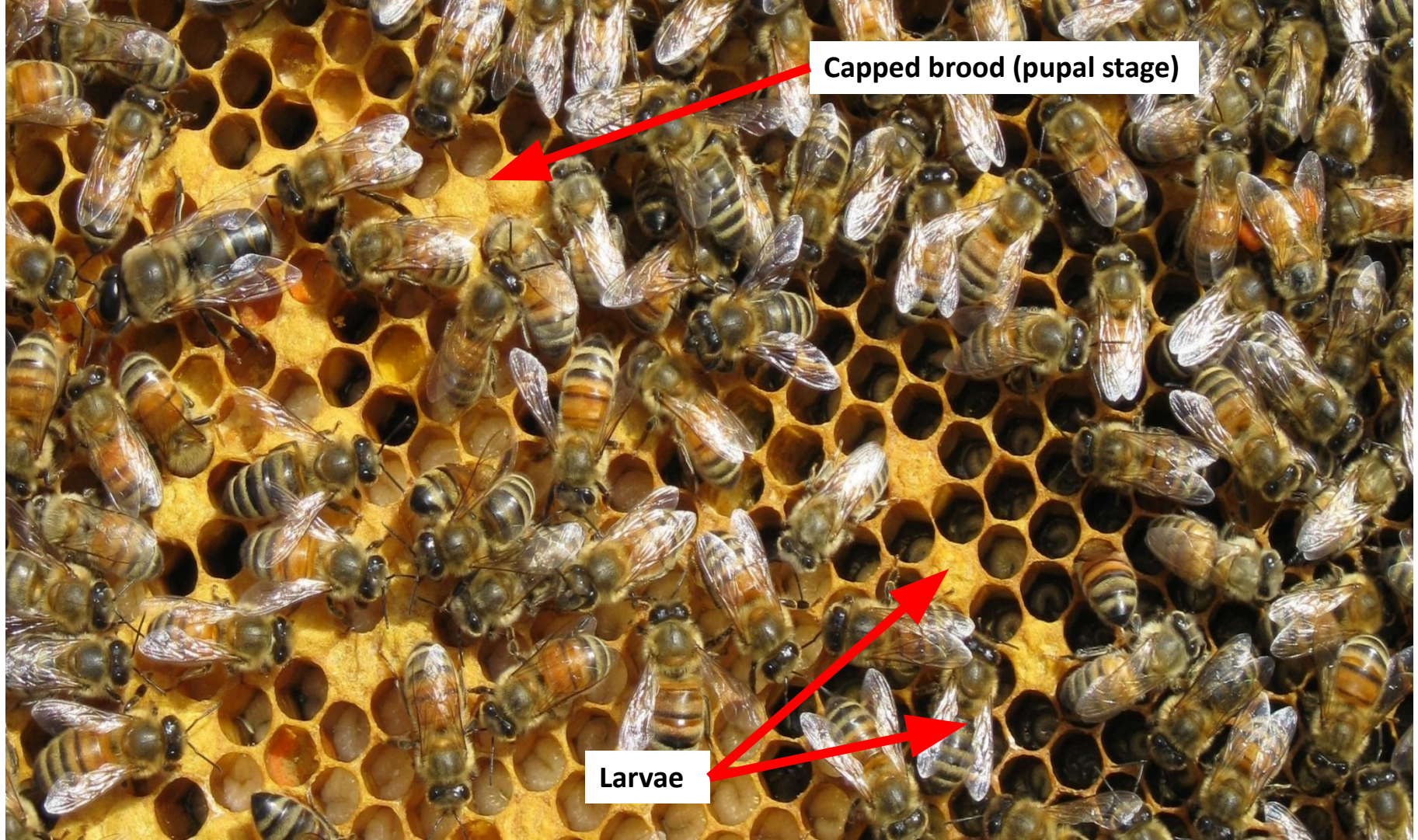


Perfect Honey Frame



Eggs

“Bee Bread”



Capped brood (pupal stage)

Larvae

# The Treasure Valley Beekeepers Club

## Brooklin





[idabees.org](http://idabees.org)



# The TVBC - what we do

## Educate

- Community Ed
- OSU Apprentice Class

## Communicate

- Web site, Facebook, Emails

## Demonstrate

- Strong mentor program
- Hands on at club meetings

## Share

- Knowledge, equipment, bees

**Just \$20 a year**





HOME

ABOUT

PRESENTATIONS

RESOURCES

JR. BEE CLUB

CLUB PHOTOS

Welcome all beekeeping enthusiasts to the Treasure Valley Beekeepers Club website!

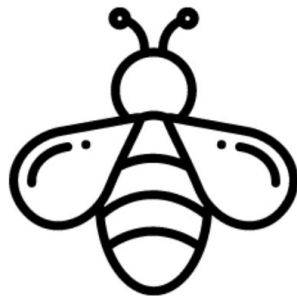
**Next Ringleader's Meeting - Tuesday, March 19, 6:00pm - [See Location](#)**

**Next Member's Meeting - Tuesday, March 26, 6:30pm - Boise Eagle's Lodge**

*The ABC's of the TVBC - What to know for February, 2024...*

## Apiary

What your bees are doing



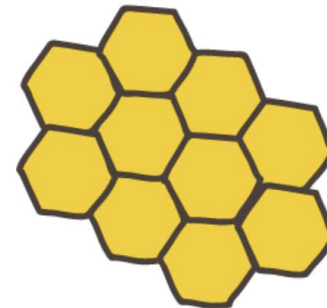
## Beekeeper

What you should be doing



## Community

What your community is doing



# What to do about Swarms

## Brooklin





# Swarms - what to do

[idabees.org](http://idabees.org)



## Is it a *honey bee* swarm?

- advice

## Can you request its removal?

- Property owners can

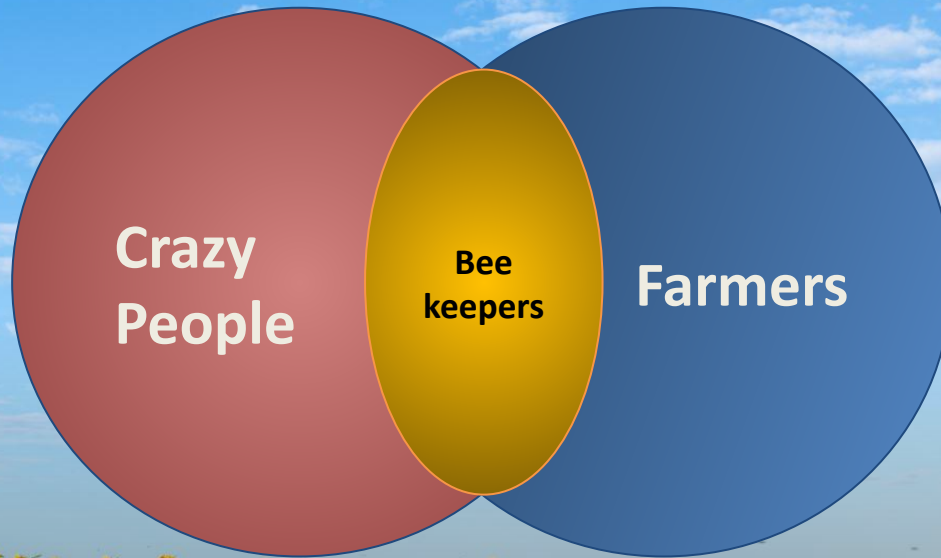
## Use our website

- Follow our step-by-step guide

## Call us

- Ensure you are using a knowledgeable, experienced and ethical beekeeper

# Thanks and Happy Beekeeping!



[idabees.org](http://idabees.org)